



Flying NZ Cook Strait Regionals

Hosted by Wanganui Aero Club

5-6th November 2021

Supplementary Information

Key Contacts

Lisa Macdonald	FNZ Executive Secretary	027 249 5251
Leroy Johnston	FNZ Cook Rep/Event Director	027 280 1838
Darren Luff	WAC President	027 449 5597
Jonathan Mauchline	WAC CFI/OIC Flying	021 025 19539
TBC	Chief Air Judge	027 413 4863
Rodney Maas	Chief Ground Judge	021 182 9222
Murray Shaw	WAC Safety Officer	027 494 7726
Wanganui Aeroclub Office		06 345 0914

Briefings

Sat 6 th 7.30am	Judges Briefing
Sat 6 th 8.00am	Competitors Briefing

Meals

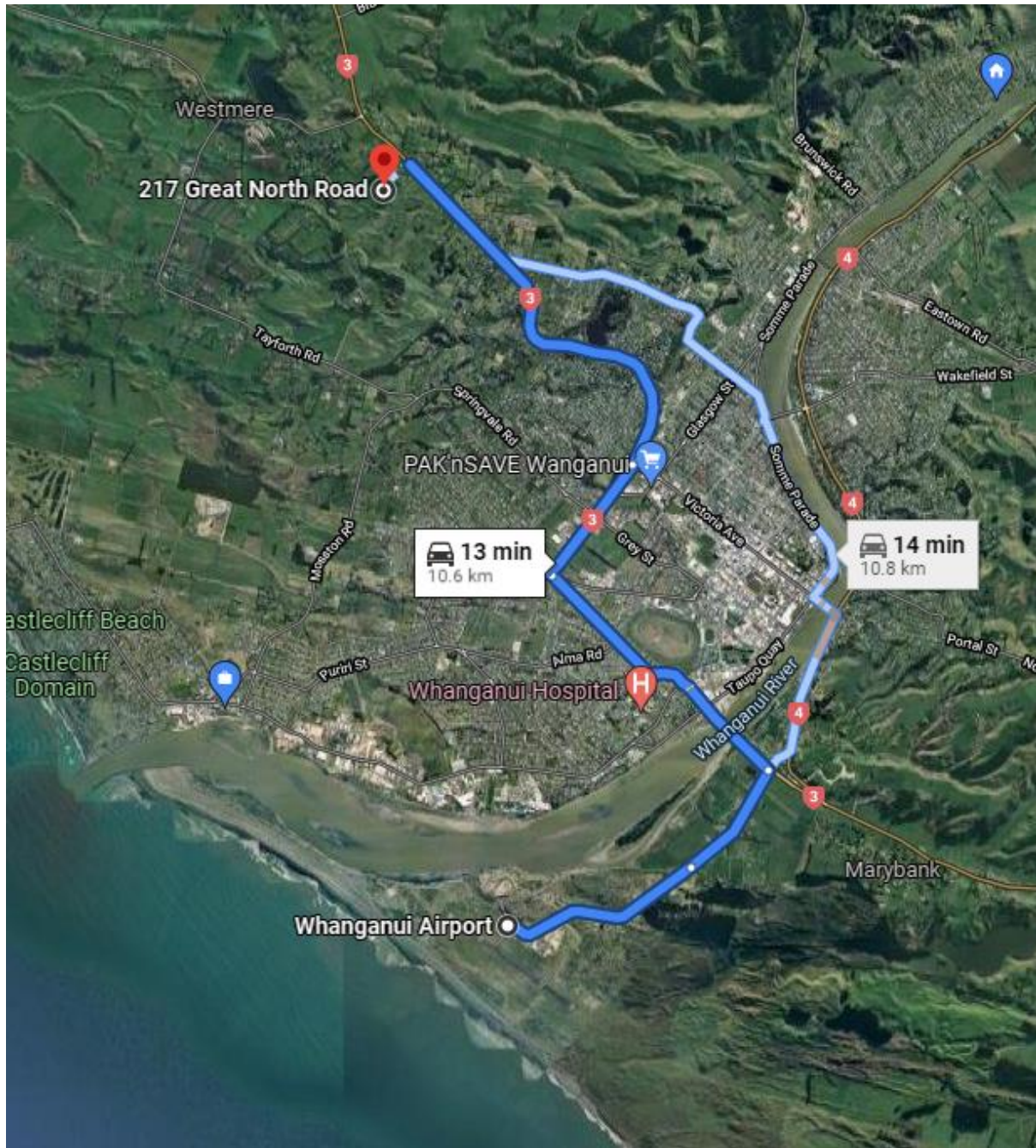
Friday 5 th –	BBQ	Aero club from 6pm
Saturday 6 th	Breakfast	Aero Club from 7am
Saturday 6 th	Lunch	Aero Club from 12pm
Saturday 6 th	Dinner	Richmond Harding Hangar (off field) from 6.30pm
Sunday 7 th	Breakfast	Aeroclub from 7am

Light refreshments will be provided throughout Saturday, tea coffee, baking etc.

Prize Giving Dinner – 6.30pm

217 Great North Road (SH3), Whanganui

Shuttle Vans will be running all weekend



Safety - Hi Vis Vests

It is a Flying NZ and an WAC requirement that hi viz vests must be worn whenever airside. (This includes the GA Parking). Please remember to bring one for everyone who is coming.

Transport

Vans will be running regularly throughout the weekend for hotel drop off/pickups and transport to and from the dinner venue.



IMPORTANT

PLEASE CHECK THE LATEST AIP AND VFR MAPS PRIOR TO THE WEEKEND AS THERE WILL BE SIGNIFICANT CHANGE WITH VFR REPORTING POINTS IN THE NEXT MAP UPDATE DUE AROUND THE SAME TIME AS THIS EVENT.

AIP New Zealand

NZWU AD 2 - 35.1

ELEV 27

NZWU

AWIB: 129.0

WHANGANUI

VFR ARRIVAL PROCEDURES

UNICOM/UNATTENDED: 120.2

VFR Procedures

Whanganui airport is a busy aerodrome and pilots using it need to brief themselves on the various local requirements prior to arrival.

Pilots not familiar with Whanganui airport should advise Whanganui UNICOM (during hours of service). If the circuit is busy be prepared to join by a Standard Overhead Join.

Aircraft above 5000 kg MCTOW should position to join and report at least 5 NM final for active runway when on a visual approach.

When joining overhead or via the non-traffic side care must be taken not to descend below 1000 ft AMSL due to helicopters operating directly below (not above 800 ft) in the helicopter circuit.

Helicopters should join the helicopter circuit not above 800 ft.

Non-standard arrivals/departures or joining procedures are not permitted.

When practicable give way to high-performance aircraft (i.e. scheduled passenger aircraft, ambulance flights etc).

Landing lights and anti-collision lights are to be activated within the MBZ if so equipped.

Communication

Arriving aircraft

Listen to AWIB. Establish status of UNICOM (on-watch/off-watch).

Change to 120.2 MHz.

Activate landing lights and anti-collision lights if so equipped.

Listen out to ascertain which runway is in use.

Broadcast callsign, position, altitude and joining intentions on entering the Whanganui MBZ.

Give way to traffic already established in the circuit — be prepared join via a Standard Overhead Join.

Broadcast callsign, position, altitude and intentions when arriving overhead.

Circuiting aircraft

Activate landing lights and anti-collision lights if so equipped.

Broadcast callsign, position, altitude (unless at standard circuit height) and intentions on the down-wind leg. Broadcast callsign and position when established on final.

When practicable give way to high-performance aircraft (i.e. scheduled passenger aircraft, ambulance flights etc).

Noise Abatement Rules

To minimise possible noise nuisance to residents pilots should, where practicable, avoid extended flight below 2000 ft over the built-up areas of Whanganui.

Night circuit training is not to be conducted between 2200 – 0630 NZST or 2300 – 0630 NZDT.

Effective: 22 APR 21

© Civil Aviation Authority

**WHANGANUI
VFR ARRIVAL PROCEDURES**



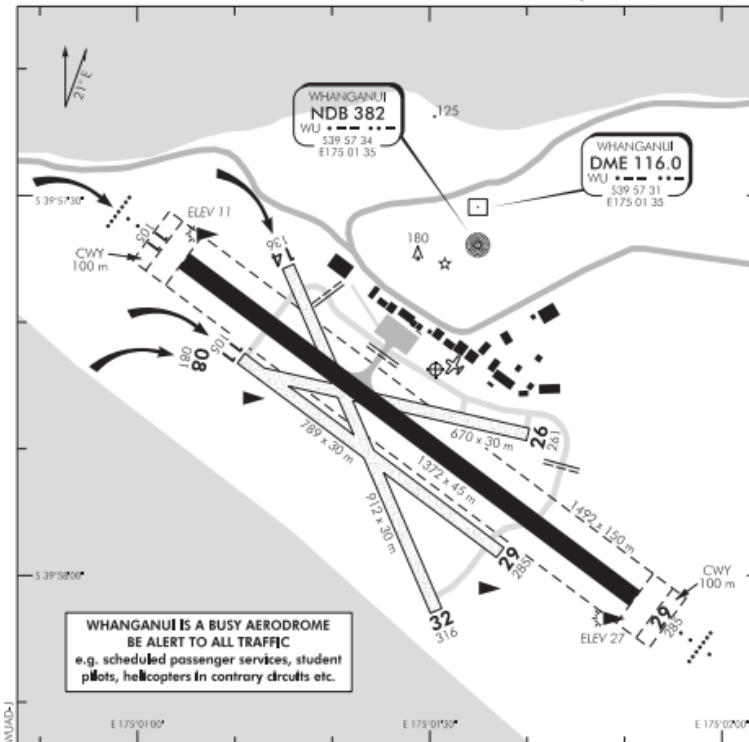
AIP New Zealand

NZJU AD 2 - 51.1

ELEV 27
NZJU
AWIB: 129.0

WHANGANUI AERODROME (1)

UNICOM/UNATTENDED: 120.2



1. Circuit: RWY 08, 11, 14 — Aircraft right hand — Helicopter left hand
RWY 26, 29, 32 — Aircraft left hand — Helicopter right hand
Helicopter circuit height 800 ft maximum
2. Helicopters are required to air taxi on all designated taxiways and terminal parking areas.
3. **Simultaneous take-offs and/or landings are prohibited.**
4. **CAUTION:**
 - All grass movement areas may be soft and braking action may be poor during and after periods of rain or showers.
 - Transition from Apron and Taxiway A to grass is rough and B1 to RWY 29 undulating. Aircraft with low propeller clearance should exercise caution.
 - Transition from SW corner of apron to TWY D prohibited due drainage bund.
 - Multiple bird hazards at times.
5. Extensive fixed and rotary wing training being carried out at all times — on and adjacent to the airfield.
6. **Aircraft are NOT to be left unattended on the apron unless approved by the Airport Duty Officer on Tel (06) 349 3199 or UNICOM when on watch.**

(continued)

S 39 57 44 E 175 01 31

WHANGANUI AERODROME (1)

Effective: 22 APR 21

© Civil Aviation Authority

NZJU AD 2 - 51.2

AIP New Zealand

WHANGANUI AERODROME (2)

7. Terminal Spots 1 and 2 are reserved for scheduled operations. May be booked for charter services by calling the Airport Duty Officer on Tel (06) 349 3199.
8. Casual parking is restricted. Contact the Airport Duty Officer on Tel (06) 349 3199 or UNICOM when on watch.
9. Grass area parking — park to the east of the apron area well clear of the BP Jet A1 bowser.
10. **Parking restrictions — aircraft less than 2500 kg should park within the grassed parking areas.**
11. Accessway from the western side of the apron area for NZICPA use only.
12. Grass area parking to the west of the apron area for NZICPA use only.
13. Helicopters conducting arrivals or departures on the south side of the aerodrome must conform with fixed wing procedures.
14. Aerobatics or air displays are not permitted at the aerodrome below 2000 ft unless with the prior permission of the aerodrome operator.

Effective: 22 APR 21

© Civil Aviation Authority

WHANGANUI AERODROME (2)



AIP New Zealand

NZWU AD 2 - 52.1

Certificated Aerodrome 2 NM SSW of Whanganui

WHANGANUI OPERATIONAL DATA (1)

NZWU

RWY

RWY	SFC	Strength	Gp	Slope	ASDA	Take-off distance			LDG DIST
						1:20	1:40	1:62.5	
11 29	B	PCN 12 ¹ F/C/X/T	8	0.35U 0.35D	1372	1472	1472		1372
08 26	Gr(f)	ESWL 2565	5	0.64U 0.64D		670			670
11 29	Gr(f)	ESWL 2565	6	0.35U 0.35D		789			789
14 32	Gr(f)	ESWL 2565	7			912			912

¹ Aircraft exceeding runway strength classification may be granted exemption on a case by case basis — Contact Airport Duty Officer on Tel (06) 349 3199 for exemption prior to flight.

MINIMA

IFR Take-off		
RWY	Day	Night
11/29	300-1500	300-1500
14 & 26	300-1500	NA
08 & 32	600-3000	NA

LIGHTING

PAL: 120.2 Standard operation — transmit 5 pulses within 3 seconds.
Lights will be activated for 30 minutes.

PAL also activates PAPI and approach lighting for both runways.

A voice message is transmitted notifying pilots there are 10 minutes remaining prior to the lights turning off. Repeat transmission of 5 pulses resets lights for a further 30 minutes.

Optimal reception expected within 15 NM not below 2500 ft within the extended runway centreline area. In other areas optimal reception within 10 NM not below 2500 ft.

Runway: 11 LIL ALS, PAPI 3.00°/TCH 47, LIL RWY
29 LIL ALS, PAPI 3.42°/TCH 48, LIL RWY

RWY edge light spacing — 60 m

Aerodrome: ABN FLG W 3.75 SEC, WDI

Taxiway: Edge

Standby power available

Apron Floodlighting — Daylight switched

(continued)

Effective: 17 JUN 21

© Civil Aviation Authority

WHANGANUI
OPERATIONAL DATA (1)



NZWU AD 2 - 52.2

AIP New Zealand

WHANGANUI OPERATIONAL DATA (2)

FACILITIES

Fuel: Air BP (Suipecard) Avgas — Eastern side of the main apron
Jet A1 — Apron (fixed wing) and east of apron (helicopters — use grass area east of bowser, caution light aircraft in vicinity)

Z Energy (Suipecard) Avgas — Eastern hangars adjacent to Aero Work
Jet A1 — Eastern grass

Terminal: Passenger Terminal facility, Cafe, toilets, Phone, Wifi, Taxi, Rental Cars

Aircraft Repairs: Ravensdown Aerowork Tel (06) 345 3994

Ground Services: Aircraft requiring ground handling should contact Air Chatham's
Tel (06) 348 0228

UNICOM Services: On watch 0800 – 1800 daily. Upon request from a pilot the UNICOM operator may pass information indicating the general location of known aircraft, provide basic weather reports, preferred runway, aircraft parking, fuel locations, taxis etc.

SUPPLEMENTARY

Operator: Whanganui Airport Whanganui District Council (operator)
PO Box 637
Whanganui 4500
Tel (06) 348 0536
Email: airside@whanganui.govt.nz

For Airport staff, After Hours and Emergencies call (06) 349 3199, or (if non urgent) email airside@whanganui.govt.nz

Vehicle Access: Vehicle access restricted except by prior arrangement with the aerodrome operator.

All aircraft are subject to applicable landing charges and terms of trade as published on the Whanganui Airport website www.whanganuiairport.co.nz.

All ground operations are subject to the Whanganui Airport — Operational Conditions of Use available from the aerodrome operator.

Memorandum of Understanding (MoU)

An MoU exists between regular Whanganui airspace users detailing mutual airspace procedures. This MoU can be sourced from www.whanganuiairport.co.nz.

Effective: 22 APR 21

© Civil Aviation Authority

WHANGANUI
OPERATIONAL DATA (2)



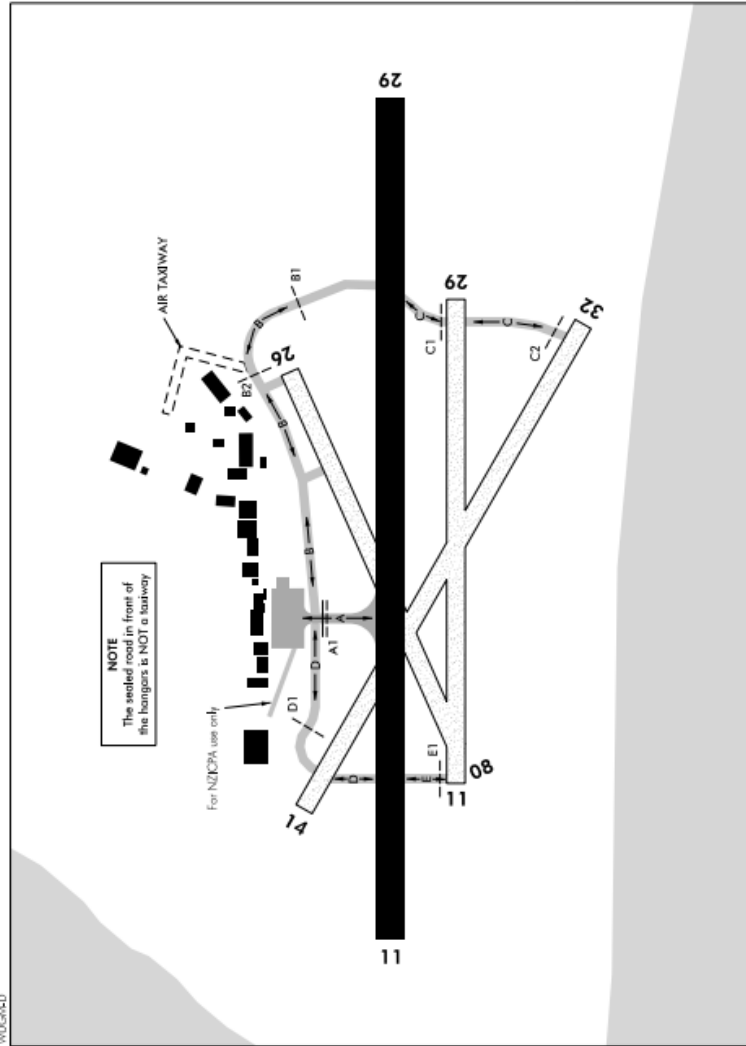
ELEV 27

NZWI

AWIB: 129.0

WHANGANUI GROUND MOVEMENTS

UNICOM/UNATTENDED: 120.2



WU/GA+D

Effective: 22 APR 21

● Civil Aviation Authority

WHANGANUI GROUND MOVEMENTS



ELEV 27

NZWI

AWIB: 129.0

WHANGANUI VFR DEPARTURE PROCEDURES

UNICOM/UNATTENDED: 120.2

VFR Procedures

Whanganui airport is a busy aerodrome and pilots using it need to brief themselves on the various local requirements prior to arrival.

Pilots not familiar with Whanganui Airport should advise Whanganui UNICOM (during hours of service).

Landing lights and anti-collision lights are to be activated within the MBZ if so equipped.

Communication

Departing aircraft

Monitor AWIB. Establish status of UNICOM (on-watch/off-watch). Change to 120.2 MHz.

Listen out to ascertain which runway is in use.

When practicable give way to high-performance aircraft (i.e. scheduled passenger aircraft, ambulance flights etc).

Broadcast callsign and intentions prior to entering the runway in use.

Activate landing lights and anti-collision lights if so equipped.

Broadcast callsign and intentions immediately prior to take-off.

Minimise runway occupancy — do not hold on the runway unless final approach path is clear.

Within the MBZ a position report is required at 10 minute intervals and on vacating.

Noise Abatement Rules

To minimise possible noise nuisance to residents pilots should, where practicable, avoid extended flight below 2000 ft over the built-up areas of Whanganui.

Night circuit training is not to be conducted between 2200 – 0630 NZST or 2300 – 0630 NZDT.

Effective: 22 APR 21

© Civil Aviation Authority

WHANGANUI VFR DEPARTURE PROCEDURES