



Flying NZ Northern Rally – Hosted by RNZAF Base Auckland ASC, WHENUAPAI

Supplementary Information

Please note that the competitions will be held on the northern side of the airfield where the gliding usually operates from. Supporters wishing to attend and travel to the airfield by car will come via Punga Road to the corner of Karaka Road.

Entrance onto the airfield will only be allowed to registered competitors and supporters, who must also wear a hi-vis vest.

COMPETITORS AND SUPPORTERS.

Due to Base security requirements, we will be requesting confirmed names of competitors and supporters by **no later than 11th October**. This will enable security passes to be processed before the event. There will be no access to the main air base for the competition; airfield access will be through the crash fire gate located on Karaka Road.

Aircraft liability insurance is a **minimum of \$2 million** to land at NZWP and proof of this, e.g. copy of the Insurance Certificate, will need to be supplied at the same time as the names of competitors & supporters.

COMPETITION DATES:

- Saturday 24th October – Fly in and competition day.
 - o 0800 hrs – Competition brief
 - o 0900-1700 hrs – Competition flying
 - o 1900 hrs – Presentation dinner and results announced at Hobsonville RSA.

- Sunday 25th Oct – Back-up competition day and fly out.

Landing Fees

- There will be NO landing fees 😊.



AVGAS

- There will be a limited refuelling capability available for the weekend. Competitors are advised to refuel aircraft prior to arriving at NZWP

Hi Vis Vests

- It is a Flying NZ and an Airport requirement that hi vis vests must be worn whenever airside. (This includes the Parking area). Please do remember to bring one for everyone who is coming, this will include supporters

Accommodation

- If you require accommodation recommendations please advise. We are presuming that most competitors & supporters will be Auckland based. None the less we can make recommendations if required.

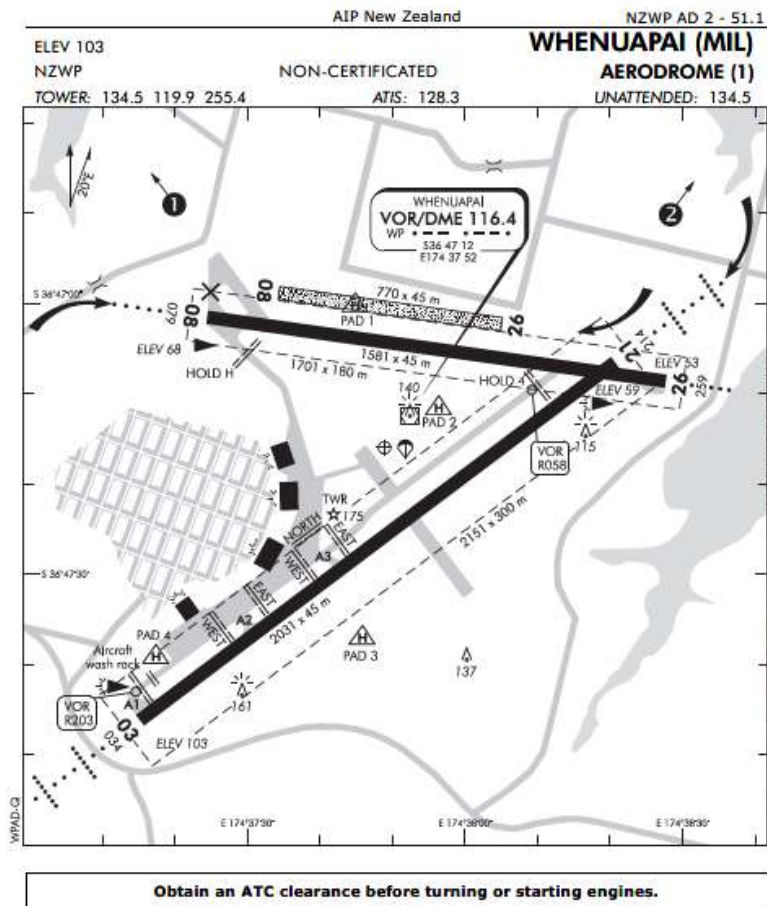
Other Operators/Scheduled Services

- Given that Whenuapai is an active military base and can be called out for SAR duties at any given time we need to be aware that RNZAF operations will take precedence.
- The Tower will be on watch during the competitions

GA Parking

- Only competition aircraft will be able to fly in.

Indicative only – not finalised



Aerobatic box



Saturday Breakfast

- Cooked or Cereal –at the competition base – \$15:00 per person

Saturday Lunch

- At the competition base – \$15:00 per person

Saturday Dinner & Prizegiving

- The formal Dinner and Prizegiving will take place at the Hobsonville RSA, 114 Hobsonville Rd and the buffet dinner & dessert will cost \$30:00 pp.

If you have any queries

- of a general nature regarding the competitions please contact Flying NZ
- of a specific nature regarding flying into Whenuapai please contact Glen Sycamore – CFI on 021 736 227